



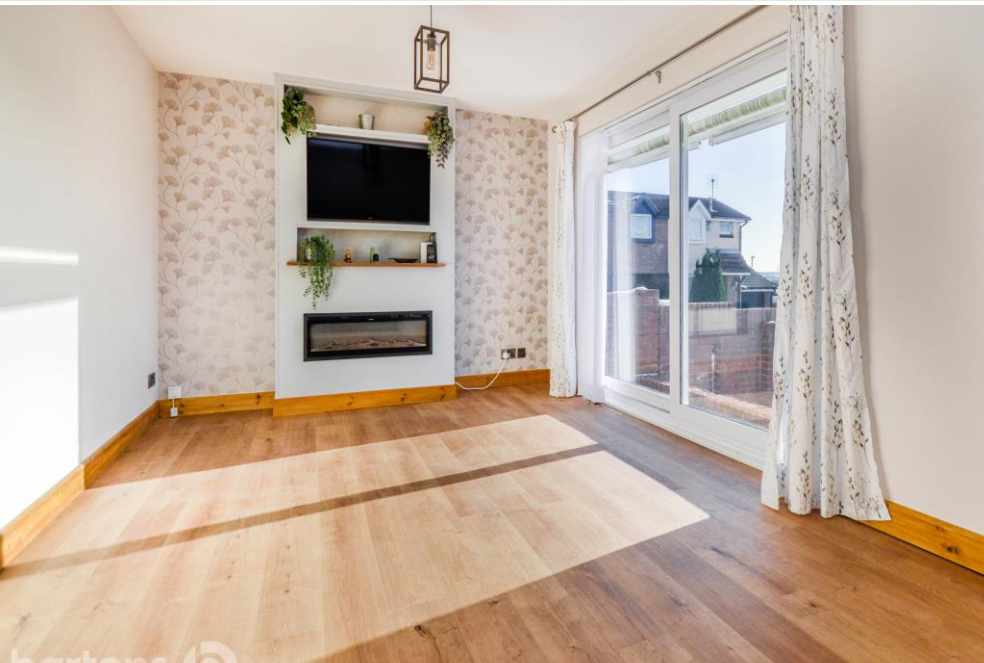
Searby Road, Bramley



This beautifully presented bungalow has been refurbished throughout to a high specification, including a serviced combi boiler central heating system with a smartphone control thermostat, LVT flooring throughout and is conveniently located within walking distance to a choice of shops, a little further to the wide choice of amenities at Wickersley and with excellent transport links for the M1 & M18.

In brief the property comprises; Entrance Hall * Lounge with Feature Fire, Media Wall and Patio Doors * Newly Fitted Howdens Kitchen with Integral Appliances * Two Bedrooms * Newly Fitted Tiled Shower Room * Front and Rear Low Maintenance Gardens * Driveway and Garage.

Guide Price: £210,000 to £220,000



www.bartons-net.co.uk

